

Withern Village News



Sunset over the Trout Farm, by Sarah Windsor

Alongside this Newsletter is a copy of this year's Flower & Veg Show programme.

You will notice the new Advance Entry Form, which should help to speed up the entry process. Childrens' classes are once again free to enter, and there are a few more this year!

We are seeking raffle and tombola prizes, and also volunteers on the day - please get in touch if you can help with any of these.

If you:

- Have any feedback to offer
- Would like to contribute photos, poems, memories
- Would like birthdays, anniversaries or other announcements featuring
- Or would like to place an advert,

please email withernvillagehall@gmail.com

Hollie Pocklington, Editor

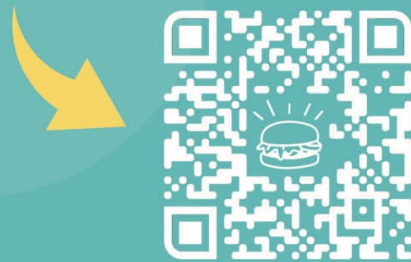


LOUTH TO MOUTH

HELLO WITHERN!

HAVE YOU HEARD OF LOUTH TO MOUTH?

LISTING ALL OF LOUTH'S
EXCELLENT EATERIES, IT'S EASY
TO SEE WHICH ONES WILL
DELIVER TO YOU!



WWW.LOUGHTOMOUTH.CO.UK

Upcoming Events

Every Sunday

Weekly Worship at Withern Chapel, 10:30am

Every Monday

Withern Singers meet at Withern Chapel, 7:30pm

Every Tuesday

Withern Art Group meet at Withern Village Hall, 1:30pm - 3:30pm

Every Tuesday

Coffee & Cake at Withern Chapel, 2:00pm - 4:00pm

Every Wednesday

Withern Sewing Group meet at Withern Village Hall, 10:00am - 1:00pm

Parish Council Meeting at Withern Village Hall

Tuesday 16th April, 7:00pm

Race Night at Withern Village Hall

Saturday, 4th May

Full details further into this Newsletter

Withern Village Hall AGM at Withern Village Hall

Wednesday 8th May, 2:00pm

Sunday Service at Withern Chapel

Sunday 12th May, 10:30am followed by a lunch to raise funds for Christian Aid.

Parish Council Meeting at Withern Village Hall

Tuesday 28th May, 7:00pm

Anniversary Service at Withern Chapel, led by Rev Margaret Asiedu

Sunday, 7th July followed by a lunch

Upcoming Events

Annual Flower & Vegetable Show at Withern Village Hall
Saturday 27th July. Programmes available now!

An Evening with Medium Joe at Withern Village Hall
Saturday, 28th September, 6:30pm start

Obituaries

Cyril Harrison

Cyril was born in the village in 1927 and lived in Withern until 1990, when he and wife Joan moved to Alford.

Cyril was chair of the Parish Council and a school governor; an active village member. He died on 15th February just 12 weeks after Joan, who he married in Withern chapel in 1952.

Sid Roberts

Long term resident of Withern Sid passed away on 14th March.

Probably best known as the "poppy man", Sid did the rounds for the British Legion until his late wife took ill.

Our thoughts and sympathies are with Sid's family at this time.



Mrs. Bell

Birthdays

Beryl Bell - 90 on 11th April
Freddie Pridgeon - 2 on 13th May

Parish Council

Police and Crime Commissioner Elections

Nominations are being received by the 5th of April; if the election is contested, a vote will occur on Thursday, 2nd of May. Don't forget you can register for a postal vote.; you can do this by completing an application form.

To complete an application to vote by post on the secure government portal, visit www.gov.uk/apply-postal-vote

You will be required to provide your national insurance number, as well as submitting a photograph of your signature. Please ensure the photograph of your signature is on plain, white paper and that the photograph is clear and light.

If you are unable to submit an application on the secure government portal, you can download and print a paper postal vote application form or email elections@e-lindsey.gov.uk to request a paper application form.

Return your completed paper form to us either:

As a scanned attachment to an email to elections@e-lindsey.gov.uk.

Please ensure that the image is of good quality and your signature is clear.

Attachments should be sent in an acceptable file format (PDF).

or post it to us at Electoral Services, The Hub, Mareham Road, Horncastle, LN9 6PH

National Grid Upgrade:

Many thanks to all those who filled out and sent back any of the postcards delivered in the last newsletter. This is the first consultation. It will be a standing item on the Parish Council Agenda. The Parish Council submitted two objections to this proposal. We would appreciate any feedback on the banners in the village. Do you want them to stay up at this time? Please email Sarah, the Parish Clerk, to share your views.

Nuclear waste disposal is a standing item on the Parish Council agenda. Please come along to the next meeting to find out the latest updates.

Speed Watch:

Now that the warmer weather is here, we are hoping to run more events;

if you are a volunteer, please sign up for sessions. If you are concerned about the speed of traffic in the village, please contact the Parish Clerk, who will arrange for you to get the needed training.

Litter Pick:

Thank you to all who participated in the litter pick on March 9th. A large number of bags were collected.

Annual Meetings:

The Annual Parish Meeting will occur on the same evening as the Annual Parish Council meeting. This meeting is held once a year and is not a council meeting but a village meeting. All are welcome to share views on anything in the parish. The dates of both meetings are as follows: 28th of May 2024, the Annual Parish Meeting starts at 6.30 pm, and the Annual Parish Council meeting starts at 7 pm.

NEXT PARISH COUNCIL MEETING - 16th of April at 7 pm in the Village Hall - all are welcome to attend.

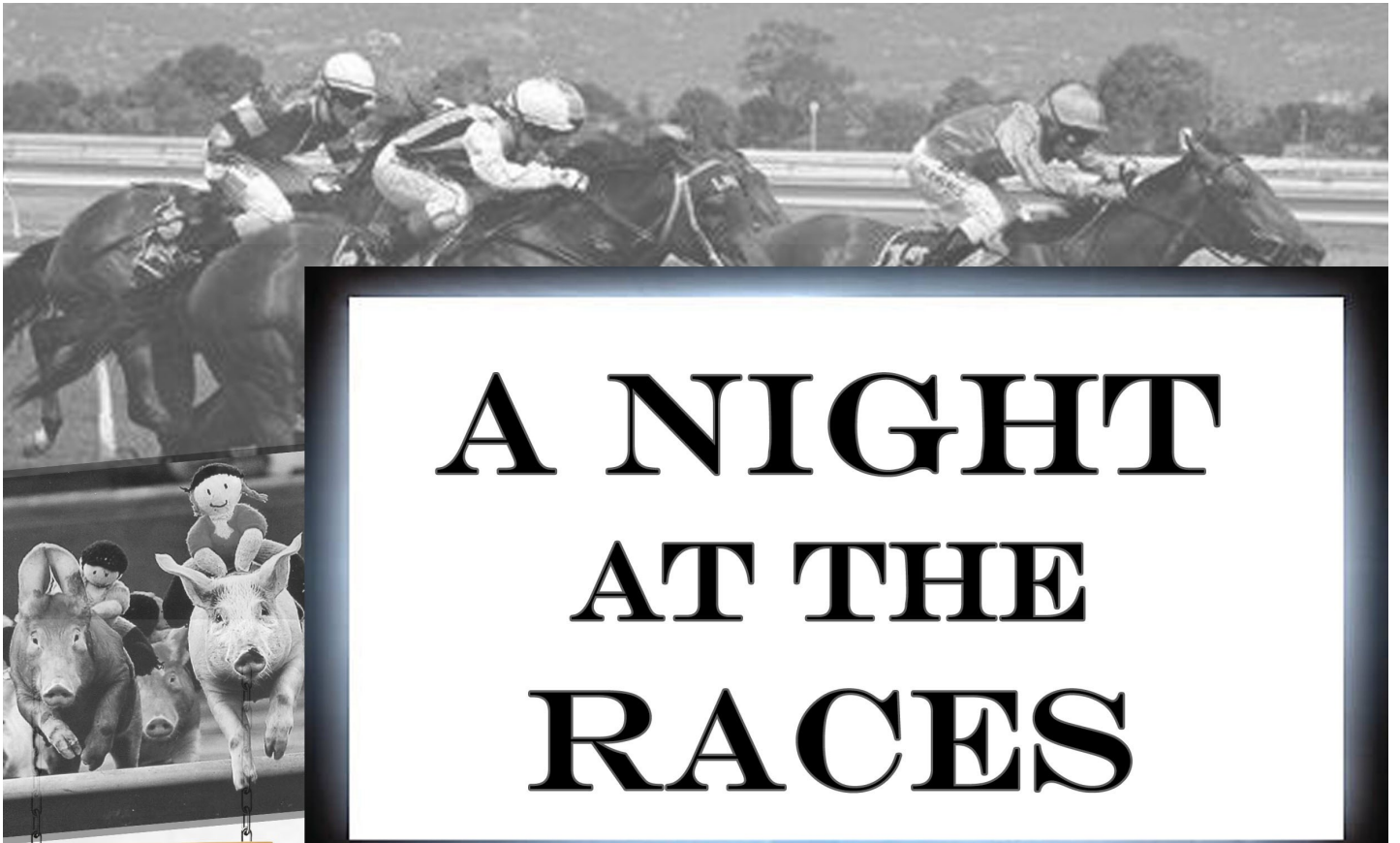
Contact details - Sarah Kennett Parish Clerk

Email: parishclerkwithernstain@gmail.com

Telephone: 07788717313 (please note the new number)



The image is a promotional graphic for Manby Meat & Fish. On the left, there is a photograph of various fresh ingredients: a large piece of raw meat (possibly lamb chops) garnished with a sprig of rosemary, a small bowl of olive oil, a small bowl of peppercorns, and some shallots. In the center is a circular logo with a scalloped edge. Inside the circle, there is a stylized illustration of a cleaver and a fish hook. Below the illustration, it says 'EST 2004'. A banner across the middle of the circle contains the word 'MANBY' in large, bold, serif letters. Below the banner, it says 'MEAT & FISH'. To the right of the logo is a map of the United Kingdom with a callout to the location of Manby. Below the map, the text reads: 'Manby Meat & Fish', 'Carlton Road, Manby', 'Lincs, LN11 8HG'. Below that is the phone number '01507 327 396'. At the bottom right is a QR code. At the very bottom of the graphic is the website address 'www.manbymeatandfish.co.uk'.



A NIGHT AT THE RACES

Licensed
Bar

Withern Village Hall

Saturday, 4th May

Doors Open 6:30pm - First Race 7:00pm

Tickets £10.00

**Available to buy from Village Hall Committee Members
or email withernvillagehall@gmail.com**

**Includes 8x £1.00 betting tokens, and your first drink at the bar
Walk-ins also welcome to pay as you go, but places are limited!**

With thanks to our Race Sponsors:

**Alford Pharmacy --- Dennett's Ice Cream ---- Fairburn's Eggs
The Grange Antiques, Huttoft --- Manby Meat & Fish**

Kennett Electrical & Compliance--- Pocklingtons Bakery --- Withern Art Group

Science at Home

Making Rainbow paper

To make your own pH paper at home (paper that tests if a substance is an acid or an alkali) You will need the following:

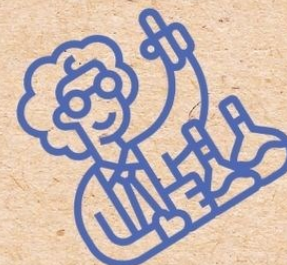
Blotting paper

Red cabbage

Bowl

Hot water

Sieve or Funnel and cotton wool



Method

Prepare the cabbage

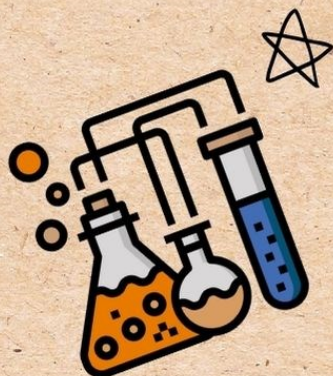
- Chop up the red cabbage into small pieces.
- Add to the bowl, pour over the boiling water and leave for 30 min.
- Sieve the mixture and keep the fluid - this will be a dark red cabbage colour.

Making the paper

- Add a few drops to the paper and leave to dry.
- Once dry you can use the paper to test for acids and alkalis.

The science!

If a substance is red, it is an acid; if it is neutral, it will stay purple. A bicarbonate of soda solution (slightly basic) will turn blue, and something strongly basic, like drain cleaner (caustic soda), will turn yellow or green.



ABOUT US

Science Cafe offers various coaching and tutoring services in Science and Maths.

Get in touch if you would like more details:
www.Sciencecafe.co.uk





The Practical Gardener

Mowing Service and general Garden Maintenance
Based in Withern

No job too small



For advice
or a no obligation quote
please call Bryan on
01507 860081 or 07747325801



POCKLINGTON'S
Bakery Ltd
Est 1924

Celebrating 100 Years

To celebrate our Centenary,
we'd like to offer residents of Withern
a discount card, which can be used
in our Louth Shop.

To register your interest, please email Hollie
hollie@pbl.uk.com

Past Times

Castle Hill, Withern

The monument includes a medieval moated site which was altered by the addition of earthwork defences thought to date from the Civil War. Known as Castle Hill, it is located at Hall Farm 250m east of the church in Withern. In 1086 land at Withern was held by Earl Hugh as part of his manor of Greetham, and between the 13th and 15th centuries it was variously held by the Well family and the Crown. From the 15th to the 18th centuries a branch of the Fitzwilliam family, established at Mablethorpe Hall, held large estates in Withern and Mablethorpe; 17th century documentary evidence makes reference to Fitzwilliams at Withern, and Castle Hill is believed to have been the location of a house belonging to the Fitzwilliam family. In the post-medieval period a building, known as Withern Hall, was located immediately to the north west of the site but was later destroyed.

Although medieval in origin, the moated site is believed to have been altered in the post-medieval period to form a defensive position which included the creation of ramparts and angle bastions together with the enhancement of the moat. Situated on fairly level ground, on the eastern side of the Great Eau, it takes the form of a large embanked enclosure raised 2m above the surrounding ground level and enclosed by a moat.

The moat, now dry, is steep sided measuring 2m to 18m in width and up to 2m deep. The moated enclosure is trapezoidal in plan measuring 80m by 75m tapering to 60m in width at the south eastern side. The level interior is enclosed on three sides, to the north east, south east and south west, by a steep sided, flat-topped earthen bank or rampart, standing up to 1.5m high and measuring 8m to 10m in width at the base and approximately 6m in width at the top. At each corner the rampart splay outward forming a platform approximately 7m in width; these are thought to represent bastions, which would have

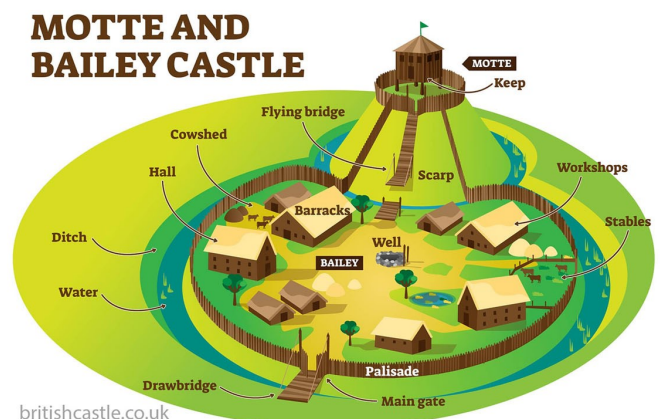


provided gun emplacements. The north eastern rampart is interrupted mid-way along its length by a narrow hollow leading down to the moat, thought to represent a modern access point.

During the Civil War the area around Withern was garrisoned by the Parliamentarians, including Mablethorpe Hall; these positions were captured by the Royalists in the summer of 1643 and were then retaken by Parliamentarian forces, although subsequently raids continued to be made in the area. The alterations to the moated site would have provided defences overlooking the approaches to the site and the nearby church. The north western side of the monument where the rampart is absent would have been afforded protection by the low-lying ground between the monument and the river, an area prone to flooding.

Toothill Motte and Bailey Castle

The earthwork and buried remains of the motte and bailey castle known as Toot Hill, enclosed by ditches and banks on low-lying ground adjacent to the Great Eau. The land at Tothill was part of the land of Greetham, belonging to the Norman earls of Chester. Dating to the 11th or 12th century, the site is either a fortification dating to the immediate post-conquest period or to the civil war during the reign of King Stephen. In the post-medieval period, a house, Tothill Manor, was built within the bailey.



Easter Fayre at Withern Chapel

- Thank you to everyone who came and supported our first Easter Fayre.
- £210 was raised for Chapel funds; between the food and refreshments, jams and chutneys and the raffle
 - Oliver and Casper sold their cakes and raised £92.00 for Head Up
 - Harriet ran the "Name the Teddy" stall and raised £27.50 for 2nd Middle Rasen Brownies
 - Plus around £40.00 was taken on the Charity Stalls



Job Vacancies

Pocklington's Bakery are looking for someone to join our dedicated evening shift in our Withern bakery.

We are looking for a reliable team member to help out during the busy Summer period from now until the end of September; although there is opportunity for the position to become permanent.

5 x shifts per week, with occasional holiday cover.

Start times are 5:00pm Monday to Friday, and 2:00pm on a Sunday.

Finish times vary between 10:00pm and 1:00am.

No Saturday work! Days off during the week will be on a rota basis.

No experience necessary as full training will be given to the right candidate, which will be undertaken on our day shift which is 5am starts Monday to Friday (Finish around 1:00pm)

The job will include working on our Roll Plant making baps and rolls, slicing loaves, wrapping, labelling, picking and packing products into trays ready for delivery the next day.

Have you used a piping bag before? We can use that skill on this shift too - as our evening shift are responsible for creating hundreds of fresh cream cakes per night.

Attention to detail is very important but at the same time being able to work to time constraints.

Immediate start available.

If you are interested, please email leon@pbl.uk.com or pop into the Office with your CV.

Pocklington's Bakery are looking to hire a cleaner to join our small team at our Withern bakery.

Hours of work are approx. 15 per week, worked Monday to Friday 2:00pm - 5:00pm.

Duties will include:

- Cleaning our bakery to a high standard, using the provided equipment
- Working to instructions, and filling out paperwork accurately
- Adhering to strict Health & Safety and Food Safety Requirements

This is a physically demanding role.

Attention to detail is crucial, and you must be able to work to time constraints.

Please send your CV to tina@pbl.uk.com



WE CARE ABOUT YOUR HEALTH

FREE DELIVERY



We offer same day or next day delivery* on all prescriptions.

Receive your medication to your door, free of charge.

Enquire in-store or over the phone.

*Subject to availability & eligibility

OUR SERVICES



Blood Pressure Checks



Vaccines



Weight Management



General Health Checks

We can also assist with the following conditions:

- ✓ Sinusitis
- ✓ Earache (Children)
- ✓ Impetigo
- ✓ Urinary Tract Infection (Women)
- ✓ Sore Throat
- ✓ Infected Insect Bites
- ✓ Shingles

CALL OR VISIT US

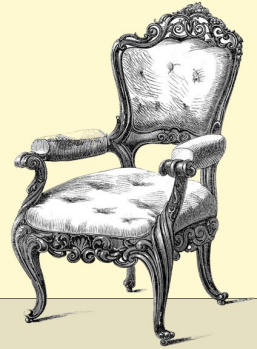
 01507 463298

 111 West St, Alford LN13 9DJ





The Grange



Antiques and Refurbished Furniture

Sutton Road, Huttoft, LN13 9RL
Open 7 days a week, 9:00am - 5:00pm



**We also buy furniture and antiques,
please send photos to 07732361795**

The Carltons' Social Club



Re-arranged 'Coronation Day' party: Sunday, May 5th!

The Carltons' Social Club has been home to music events, quizzes, theatre shows, food nights, boules tournaments and much more for over 30yrs.

Our licensed bar stocks a great range of all your favourite drinks and all at lower than pub prices!

We're open on Tuesdays, Fridays and Sundays when you can play pool, darts, scrabble or just have a chat and a drink. We often have special events which are listed on our Facebook page and in the monthly 'Earburn' newsletter.

So come along and join our thriving community, new members can be sure of a warm welcome.



**MAIN ROAD, GREAT CARLTON
LN11 8JU tel: 07732 265927**



SPRING WORD SEARCH

O K J G H P Z F V X Y Z
G I S R U W B B O O T S
A T Y A B L U E B I R D
E E U S G A R D E N T H
A H U S W Y W B K M U K
P X U K Q B L O S S O M
M G L M S J B A R T R C
J U R R B A N E R A G R
A P F A V R W E W F S L
T D R I Q O E V S K V U
U L I N L L G L C T R G
L D A F F O D I L N V R
I V U E P J H O J A C E
P W I Q N C M U D O Q E
S E E D S B S Q C X Q N



BLOSSOM
BLUEBIRD
BOOTS
CHICKS
DAFFODIL
FLOWERS

GARDEN
GRASS
GREEN
KITE
MUD
NEST

RAIN
SEEDS
TULIPS
UMBRELLA
WARM



WE'RE HIRING



Born from humble beginnings in 1951, L J Fairburn & Son Ltd has transformed into the UK's largest independent egg producer and packer. For those seeking a workplace where tradition meets modernity, and where hard work is recognised and rewarded, L J Fairburn & Son Ltd proves to be an exciting and fulfilling career destination in the heart of Lincolnshire.

 FARM WORKERS

 EGG COLLECTORS

 FACTORY OPERATIVES

 WAREHOUSE OPERATIVES

 ENGINEERS

 HGV DRIVERS

INTERESTED?

Please send your CV to:
vacancies@fairburnseggs.co.uk

*We look forward to hearing
from you!*



www.fairburnseggs.co.uk





Have you got a lawnmower, compact tractor or any other garden equipment that needs servicing or repairing in or around Withern?



Call Nathan on 07497632949 or e-mail nwoodservices25@gmail.com today for a free estimate!

- Compact tractors
- Ride on lawn mowers
- Push mowers
- Strimmers
- Chainsaws and hedge trimmers
- Leaf blowers
- Trailers and much more!



Book in now for a pre-season check and deep clean on any machine for £20!

Any bladed machine sharpened for £5!



UPVC SOLUTIONS
INSTALLATIONS • REPAIRS • LOCKSMITHS

www.upvcsolutions.co.uk



Family Run



Local



Trustworthy



upvcsolutionslincs@aol.com



07990 577 049 **24/7**



Google



5 STAR CUSTOMER RATING



UPVC
WINDOWS



SEALED GLASS
UNITS



EMERGENCY
LOCKSMITHS



REPAIRS &
ADJUSTMENTS



UPVC &
COMPOSITE DOORS



SCAN
ME



**What do you call
a train carrying
bubblegum?**

A chew-chew train.

**Want to hear
a construction
joke?**

**Oh never mind, I'm still
working on that one.**



**GARDEN & HOME
SERVICES**

**Are your small jobs taking up too much of
your time?**

- Mowing
- Weeding
- Pruning of bushes & shrubs
- Fence painting
- Garden tidying
- Home maintenance jobs

— **Dave Greaves** —

07367 345884

Alford, Mablethorpe,
Sutton on Sea &
surrounding areas

The REPAIR CAFE

We're back!

**On the second Saturday of every month
from March to July 2024 (inclusive)**

***** 10.00- 13.30 *****

**Bring along- Small Household Electricals – Bicycles -
Clothing – Textiles – Wood – Pottery – Toys**



Low Carbon Louth

**The Youth and Community Centre, Park Ave,
Louth LNI 18BX**



A free neighbourhood service – cash donations welcome

- Is your computer or laptop running slowly or broken?
- Do you think you might have a virus?
- Fed up of annoying pop up adverts or errors?
- Is your computer misbehaving?
- Having trouble connecting to the Internet?
- Want to buy a new computer but not sure what to choose?



Windows Laptop, PC and Apple Mac Repairs

FROM AS LITTLE AS £35

Onsite and remote support available

*FREE OF CHARGE DIAGNOSIS



CALL 01522 246008

Visit us on the web: Lincolnshire.it or Facebook [lincolnshireit](https://www.facebook.com/lincolnshireit)
Services provided by Lincolnshire IT Limited based in Louth



SOFINA EAR CARE
WAX REMOVAL CLINIC



**Blocked Ears?
GP Not Syringing Anymore?
On A NHS Waiting List?
Need An Appointment To
Suit Your Working Hours?**

**Sofina Ear Care Wax Removal
Clinic Is Here For You!**

Microsuction, Water Irrigation
& Instrumentation Ear Cleaning
By A Fully Qualified & Insured
Audiologist With 30 Years
Experience.

Phone 07498 206130 or see
www.sofinaearcare.co.uk for further details
Ear Wax Removal For Your Comfort And Clarity



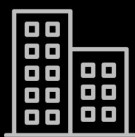
E-BOUND TECHNOLOGIES

SECURITY SYSTEM EXPERTS

> Design

> Installation

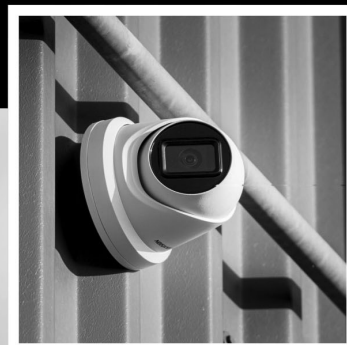
> Maintenance



**24h Support for your
home or business**




2 Year Warranty




- CCTV
- Alarm Systems
- Access Control
- Electrical Work
- Fire Alarms
- WIFI

We have engineers available in your area, such as Louth, Lincoln, Mablethorpe, Withern, South Reston and Theddlethorpe.

 01733 843 341

 info@e-bound.co.uk

 www.e-boundtechnologies.co.uk



Pest Detective



PEST CONTROL & MANAGEMENT

We can offer you a full range of services to cater for all your Domestic, Agricultural and Commercial needs.

CALL 07707 727770

andy@pest-detective.com

www.pest-detective.com

Pest Control and Management across the Lincolnshire Wolds from Lincoln to our fantastic Coastline.

JT's Recovery & Transportation

- **Car & Bike Recovery**
- **Car & Bike Transportation**
- **Damaged Vehicle RTC Recovery**

24 hour service

Tel: 07763 594 356

Useful Contacts

Parish Clerk	parishclerkwithernstain@gmail.com or 07788717313
Withern Village Hall	withernvillagehall@gmail.com or 07772 861505
Withern Facebook Page	Search "Withern"
Withern Memories Facebook Group	Search "Withern Memories"
Call Connect	0345 234 3344
Alford Merton Lodge Doctor's Surgery	01507463262
East Lindsey Medical Group	01507 603121
Marsh Medical Practice	01507 358623
Marisco Medical Practice	01507 473483
Pilgrim Hospital, Boston	01205 364801
Louth Hospital	01507 600100
DPOW Hospital, Grimsby	01472 874111
MP Victoria Atkins	020 7219 5897
Cllr Travis Hesketh	01507 450640 Travis.Hesketh@e-lindsey.gov.uk
East Lindsey District Council	01507 601111
Anglian Water	01522 341000
Police Non Emergency	101
NHS Non Emergency	111



Fully Licensed and Registered

FREE SCRAP METAL COLLECTIONS

Any old scrap, any metal

Cookers, Washers, Dryers, Dishwashers,
Bikes, Mobility Scooters, Lawnmowers,
Garden Furniture, Tools, Electrical Items,
Cables, Brass, Copper Radiators

Tel: 07756 552501