

Withern Village News



Photograph by John Brookes

This is Village Life

1/ The Churchyard Snowdrops in Early Spring
Sunday Mornings hear the Church bell ring
Our Church resounds as the Choir Sing
This is Village Life

2/ Queen Ann's Lace along the field edge
Red geraniums on a window ledge
And old Mr Gibson cutting his hedge
This is Village Life

3/ Shimmering Fields of Wheat and Rye
Swooping swallows in an evening sky
And all too soon they will say Goodbye
This is Village Life

4/ Mellow Autumn and leaves start to fall
Bare ancient beeches standing tall
Harvest Supper in the Village Hall
This is Village Life

5/ Pleasant times spent with friends who are dear
Community Spirit that shines out so clear
In this Domesday hamlet, we love living here
This is Village Life

by Jacqueline Brazier

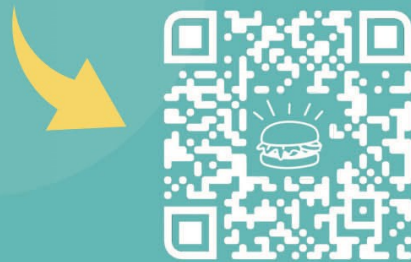


LOUTH TO MOUTH

HELLO WITHERN!

HAVE YOU HEARD OF LOUTH TO MOUTH?

LISTING ALL OF LOUTH'S
EXCELLENT EATERIES, IT'S EASY
TO SEE WHICH ONES WILL
DELIVER TO YOU!



WWW.LOUTHMOMOUTH.CO.UK

Upcoming Events

Every Sunday

Weekly Worship at Withern Chapel, 10:30am

Every Monday

Withern Singers meet at Withern Chapel, 7:30pm

Every Tuesday

Withern Art Group meet at Withern Village Hall, 1:30pm - 3:30pm

Every Tuesday

Coffee & Cake, Charity Stalls and Food Bank Donation Drop Off
at Withern Chapel, 2:00pm - 4:00pm

Every Tuesday

Jolly Roger's Mobile Fish & Chips at Whitethorn Way lay-by,
6:35pm - 6:50pm

Every Wednesday

Withern Sewing Group meet at Withern Village Hall, 10:00am - 1:00pm

Parish Council Meeting at Withern Village Hall

Tuesday 28th May, 7:00pm

Bingo at Withern Village Hall

Saturday 15th June, 7:00pm

Nuclear Waste Services Open Event at Withern Village Hall

Thursday 27th June, 5:00pm onwards

Summer Fayre at St. Margaret's Primary School

Friday 28th June, 1:15pm

Upcoming Events Cont.

Anniversary Fete at Withern Chapel,
Saturday 6th July, 12:00pm - 2:00pm

Anniversary Service at Withern Chapel, led by Rev Margaret Asiedu
Sunday, 7th July followed by a lunch

Annual Flower & Vegetable Show at Withern Village Hall
Saturday 27th July. Programmes Available Now

Soup & Sweet for Ukraine at Withern Chapel
Saturday 10th August, 12:00pm - 2:00pm

An Evening with Medium Joe at Withern Village Hall
Saturday, 28th September, 6:30pm start

Past Times *The Red Lion*



The Red Lion, 2013

Withern Village Hall

Your Village Hall Committee members are:

Chairperson: Hollie Pocklington

Secretary: Jackie Brazier

Bookings Secretary: Gwen Acklam

Treasurer: Sue Pollard

Committee Members: Chris Jesney, Chris Pocklington, Margaret Hart, Terry Lafferty.

Withern Village Hall has been successful in the first stage of grant applications, meaning we have the funds to apply for all necessary surveys and plans for a potential new hall. Watch this space!

Preparations are well under way for this year's Flower & Vegetable Show! Raffle tickets are now for sale from Committee Members. We are desperately seeking Raffle and Tombola prizes, and your donations would be greatly appreciated.

Did you know that your Village Hall is available to hire for only £10.00 per hour? Plus residents and regular groups can receive a 20% discount! We have a fully functioning kitchen, licenced bar and disabled facilities. For bookings, please email withernvillagehall@gmail.com

Withern Chapel

Next year is the 150th Anniversary of the Chapel, and we are seeking any photographs from over the years. These can be of the inside, outside, events and people, or any other paraphernalia (for example, someone has sent us a photograph of a book they received from the Sunday School). Please email to withernvillagehall@gmail.com or pass copies on to Pam or Hollie.

Obituaries



Dr David Ferguson

The sad departure of the Retired Alford Doctor David Ferguson was announced recently. His Funeral Service was held in Alford on 8th April 2024 with many of his Friends, Patients and Colleagues along with his Family attending.

When I first moved to Withern in March 1976 I was lucky enough to be able to make my first appointment as his Patient with him in Withern. In those days the Doctor's Surgery was available on consecutive Tuesdays and Thursdays and was held behind the Local PO and General Store off the Main Road. As I sat on the wooden bench in the Waiting Room I was very nervous. However as soon as I met him he put me at my ease. He was very attentive and caring as I relayed my Medical History to him. He became mine, and later, my Daughter's 'Go-To Doctor' and trusted Confidant. I am sending my Sincere Condolences to his Wife Jane and their Son and Daughter."

Author: Barbara Robinson-Tester

Donations can be made to 'The Rotary Club of Alford and Mablethorpe' in Memory of Dr David Ferguson.



Benjamin

Birthdays



John Snell - 90 on 21st May

Margaret Hart - 80 on 4th June

Benjamin Pocklington-Harvey - 1 on 4th June

Parish Council

Annual Parish Meeting

Date: 28th May

Time: 6:30 PM

Annual Parish Council Meeting

Date: 28th May

Time: 7:00 PM

All parishioners are warmly invited to attend the Annual Parish Meeting and the Annual Parish Council Meeting. If you are interested in joining the parish council, please reach out to the clerk before the meeting.

Agenda Items:

Updates on the NG upgrade (if available)

Updates on the Nuclear Waste Disposal Site (if available)

Footpaths in the village

Planning applications (if any)

October Litter pick

We have received several concerns regarding the condition of footpaths in the village. This is a collective issue that we can address together. If you have any issues or concerns, please report them on Fix My Street and inform us directly. We have notified LCC and are collaborating with them. The more reports we gather on Fix My Street, the stronger our voice becomes, and the better our chances of addressing these issues promptly.
www.fixmystreet.com

Speed Watch: Join Us!

The Speed Watch group is always keen to welcome new members. If you are concerned about the traffic speed in the village, why not join us and make a difference?

Your participation can help ensure our village remains a safe and pleasant place for everyone. Together, we can address these concerns and work

Parish Council cont.

towards practical solutions.

For more information on how to get involved, please contact the clerk
Let's make our roads safer for all!

We look forward to seeing you at the meeting and appreciate your involvement in our community affairs.

Contact details

Sarah Kennett – Parish Clerk Email: parishclerkwithernstain@gmail.com
Tel/text: 07788 717313

**Oliver and Casper:
Baking for Charity**

AS SEEN ON TV

Raising money for

HEAD UP
The Mental Health
Charity For The Armed
Forces Community

We like to bake:

- Battenberg Brownies
- Biscoff Rocky Road
- Caramel Slices
- Caramel Slices **VEGAN**
- Cookie Dough Bars
- Raspberry Crumble Slices **VEGAN**
- Rocky Road
- White Chocolate & Biscoff Blondies

Available from:
Pocklington's Bakery in Louth, during usual opening hours
and Withern Chapel, Tuesdays 2:00pm - 4:00pm

  oliver.casper.baking

Science at Home

Making a wormery

To make your own wormery you will need:

Large plastic bottle
Plant pot and saucer
Soil and leaves

Method

- Cut the top and bottom off the bottle
- Fill the plant pot with soil and worms
- Stand the middle part of the bottle into the plant pot and fill it with layers of soil and thin layers of chalk and small stones.
- Sprinkle some leaves and grass on top. Mark the layers with a pen
- Wrap some dark paper around the bottle and add water to the saucer, leave for a few days
- Observe what has happened to the layers after a few days

The science!

The layers will be mixed up, and you may see grass and leaves in the soil. The worms will eat the decaying material and take it into the soil to eat.

ABOUT US

Science Cafe offers various coaching and tutoring services in Science and Maths.

Get in touch if you would like more details:
www.Sciencecafe.co.uk



Withern Chapel's Anniversary Fete

Saturday 6th July
12:00pm - 2:00pm



Refreshments
Charity Stalls
Games & Raffle
Local Arts & Crafts



Withern Methodist Chapel
Main Road, Withern, LN13 0NF
what3words: wonderful.outwards.converter



Withern Chapel

Open every Tuesday
2:00pm - 4.00pm

Coffee & Cake

Food Bank Donation Drop Off

Charity Table Sales:
Home Made Cakes
Home Made Jams & Chutneys
Books
Puzzles & Games
...and much, much more!



Withern's Annual FLOWER & VEGETABLE SHOW

With categories including: Flowers, Fruit, Veg, Art,
Crafts, Baking, Sewing - and Children enter FREE!



Licensed Bar ~ Coffee & Cake
Stalls & Sideshows ~ Auction & Raffle

Sat 27th July 2024
Withern Village Hall

9:00am - 10:45am: Staging of Exhibits

2:00pm: Show Opens

3:00pm: Presentation of Cups

4:00pm: Auction and Raffle

For a programme, please email
withernvillagehall@gmail.com



Soup & Sweet

for Ukraine



Saturday, 10th August

12:00pm - 2:00pm

Withern Methodist Chapel

Suggested donation £5.00

All monies raised will go to UNICEF Ukraine.

If you are unable to attend but would like to make a monetary donation, please post through the letterbox of "Meersbrook", Main Road, Withern (next to the Chapel)

Takeaway options available.

N & B SCRAP METAL



Fully Licensed and Registered

FREE SCRAP METAL COLLECTIONS
Any old scrap, any metal

Cookers, Washers, Dryers, Dishwashers,
Bikes, Mobility Scooters, Lawnmowers,
Garden Furniture, Tools, Electrical Items,
Cables, Brass, Copper Radiators

Tel: 07756 552501

The poster features a central white circle on a light green background. At the top, a string of colorful triangular bunting hangs across the width. Below the bunting is the school's circular logo, which contains a fish and the text 'ST. Margaret's CE School' and 'Withern'. The main title 'SUMMER FAYRE' is written in large, bold, red letters. Below the title, the date and time 'FRIDAY 28TH JUNE 1:15-3:15 PM' are written in bold yellow letters. Underneath, the text 'An event for the whole family & community to enjoy.' is in black. The word 'Events' is written in large green letters, followed by a list of activities in black text. At the bottom, a green curved banner contains the text 'Sponsored events:' followed by three lines of text. The bottom left corner has a black box with contact information for James McGregor. The bottom right corner has a white box with the logo for Tom Hewett Plumbing & Heating. The very bottom of the poster features the Choice Properties Estate Agents logo and the school's PTA charity number.

ST MARGARET'S CE PRIMARY SCHOOL
SUMMER FAYRE
FRIDAY 28TH JUNE 1:15-3:15 PM
An event for the whole family & community to enjoy.
Events
Refreshments, BBQ, Grand Raffle, Tombola,
Bottle Tombola (adults only), Hoopla,
Glitter Tattoos, Uniform Stall, Face Painting,
Teddy Bear Roll, Photo Opportunities,
Hook a Duck, Welly Wanging,
Ball in a Bucket, Soak the Teacher
and Name the Teddy

Sponsored events:
Earthbound Misfits circus skills workshop - Choice Properties
Bubble fairy - Tom Hewett Plumbing and Heating
Farmer Browns - Canon Independent Mortgage Services.

James McGregor
Director/Mortgage Broker
01507 606929
James@canonindependentms.co.uk

CANON
INDEPENDENT MS

TOM HEWETT
PLUMBING & HEATING

CHOICE PROPERTIES
Estate Agents

St Margaret's C of E Primary School PTA
Charity Number - 1107563



The Practical Gardener

Mowing Service and general Garden Maintenance
Based in Withern

No job too small



For advice
or a no obligation quote
please call Bryan on
01507 860081 or 07747325801



Helen Humphreys your local travel designer in Great Carlton

Your holiday, your way. Specialising in bucket list travel for the over 50's.

Why not drop by, have a cuppa and discuss your plans?

25 years experience, 100% financial protection

01507 451743 Whatsap 07944518770

OLD SCHOOL

GYM 24

HOUR ACCESS

FEMALE OWNED IN MABLETHORPE

**FOR MORE INFORMATION:
07359 598608**



@OLDSCHOOLGYM24HR



@OLDSCHOOLGYM24HR



ANGEL@OLDSCHOOLGYM24HR.CO.UK

ONLY £25 PER MONTH + £30 JOINING FEE PER PERSON





Sutton On Sea



upvcsolutionslincs@aol.com

UPVC SOLUTIONS

INSTALLATIONS • REPAIRS • LOCKSMITHS

www.upvcsolutions.co.uk



Family Run



Local



Trustworthy



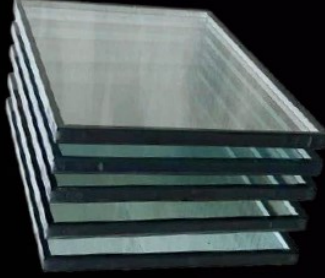
07990 577 049 **24/7**



5 STAR CUSTOMER RATING



UPVC
WINDOWS



SEALED GLASS
UNITS



EMERGENCY
LOCKSMITHS



REPAIRS &
ADJUSTMENTS



UPVC &
COMPOSITE DOORS



Assure
Certified Installer



The Carltons' Social Club



Re-arranged 'Coronation Day' party: Sunday, May 5th!

The Carltons' Social Club has been home to music events, quizzes, theatre shows, food nights, boules tournaments and much more for over 30yrs.

Our licensed bar stocks a great range of all your favourite drinks and all at lower than pub prices!

We're open on Tuesdays, Fridays and Sundays when you can play pool, darts, scrabble or just have a chat and a drink. We often have special events which are listed on our Facebook page and in the monthly 'Earburn' newsletter.

So come along and join our thriving community, new members can be sure of a warm welcome.



MAIN ROAD, GREAT CARLTON
LN11 8JU tel: 07732 265927



Aromaflex

By Amanda Burton

Advanced Crystal Healing

Aromatherapy Massage

Hypnotherapy

Reflexology

Reiki

Over 30 years experience

Tel: 07768918547

5 Rawsley Close, Alford, LN13 9PZ

Useful Contacts

Parish Clerk	parishclerkwithernstain@gmail.com or 07788717313
Withern Village Hall	withernvillagehall@gmail.com or 07772 861505
Withern Facebook Page	Search "Withern"
Withern Memories Facebook Group	Search "Withern Memories"
Call Connect	0345 234 3344
Alford Merton Lodge Doctor's Surgery	01507463262
East Lindsey Medical Group	01507 603121
Marsh Medical Practice	01507 358623
Marisco Medical Practice	01507 473483
Pilgrim Hospital, Boston	01205 364801
Louth Hospital	01507 600100
DPOW Hospital, Grimsby	01472 874111
MP Victoria Atkins	020 7219 5897
Cllr Travis Hesketh	01507 450640 Travis.Hesketh@e-lindsey.gov.uk
East Lindsey District Council	01507 601111
Anglian Water	01522 341000
Police Non Emergency	101
NHS Non Emergency	111

FOOD BANK DONATION POINT

WITHERN CHAPEL
TUESDAYS 2:00pm - 4:00pm

♥ Tinned Food

♥ Dried Goods

♥ Toiletries

